



# PRINCE Dr. K. VASUDEVAN COLLEGE OF ENGINEERING AND TECHNOLOGY

(Approved by AICTE, Affiliated to Anna University & ISO 9001:2015 Certified Institution)  
Medavakkam-Mambakkam Main Road, Ponmar, Chennai-600127

## ALUMNI FEEDBACK ON SYLLABUS – ANALYSIS REPORT

Academic Year

2019-2020

Department

Computer Science and Engineering

Number of Respondents

25

Feedback Rate: Strongly Agree (5), Agree (4), Neutral (3), Disagree (2), Strongly Disagree (1)

S. No	Feedback on Syllabus	5	4	3	2	1
1	Are the syllabus helps the students in improving professional competencies?	22	1	2	0	0
2	Is the syllabus suitable to present industry and Domain requirement?	21	3	1	0	0
3	Are the syllabus concepts being useful in promoting ethics and inspiring self-discipline?	20	5	0	0	0
4	Did the courses enabled to build your future carrier?	22	2	1	0	0
5	Is the course sufficient to enable the students to analyze and identify the necessary solutions?	23	1	0	1	0
6	Is the course providing good balance between theory and applications?	23	2	0	0	0
7	The syllabus facilitates in enriching knowledge and creates employment opportunities	23	1	1	0	0
8	Rate the syllabus and curriculum	20	4	0	0	1

**PRINCIPAL**

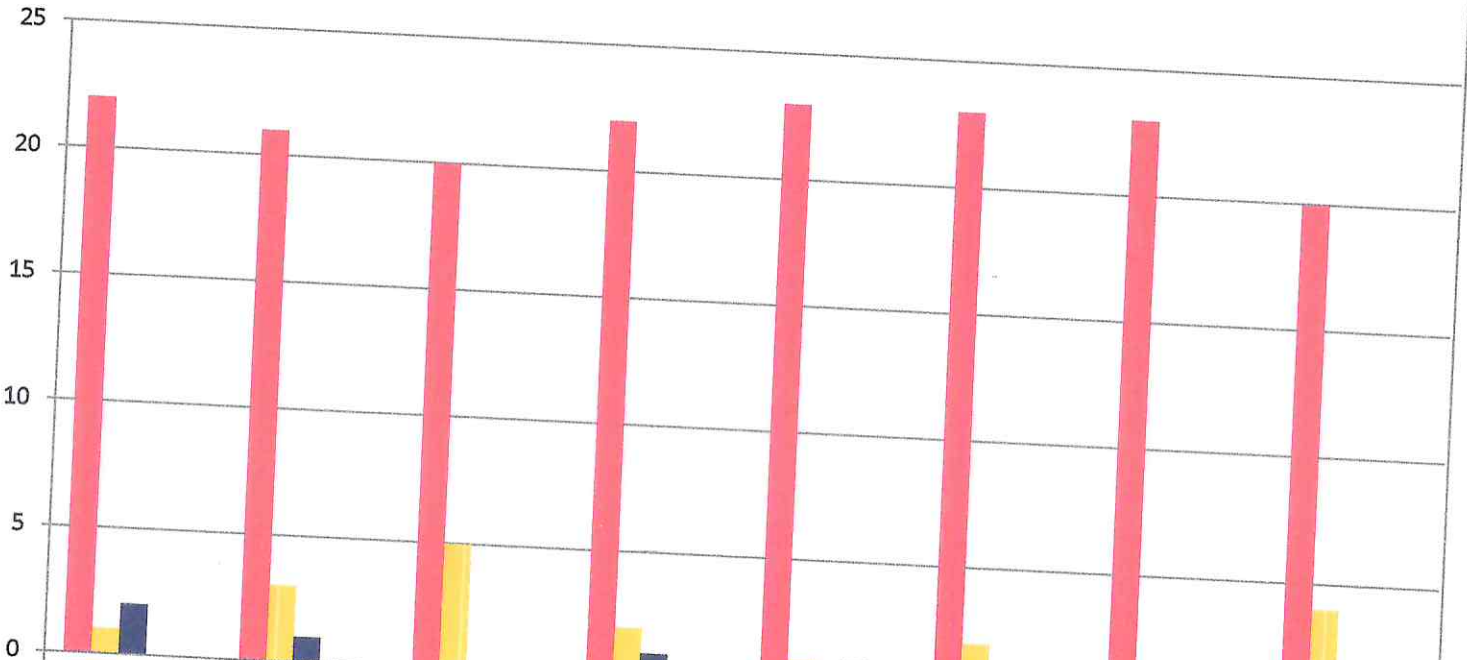
**PRINCE DR. K. VASUDEVAN COLLEGE OF  
ENGINEERING AND TECHNOLOGY  
POMMAR, CHENNAI-600127**



# PRINCE Dr. K. VASUDEVAN COLLEGE OF ENGINEERING AND TECHNOLOGY

(Approved by AICTE, Affiliated to Anna University & ISO 9001:2015 Certified Institution)  
Medavakkam-Mambakkam Main Road, Ponmar, Chennai-600127

## ALUMNI FEEDBACK ON SYLLABUS - 2019-2020 Computer Science and Engineering (NUMBER OF RESPONDENTS - 25)



	Q1	Q2	Q3	Q4	Q5	Q6	Q7	Q8
Strongly Agree (5)	22	21	20	22	23	23	23	20
Agree (4)	1	3	5	2	1	2	1	4
Neutral (3)	2	1	0	1	0	0	1	0
Disagree (2)	0	0	0	0	1	0	0	0
Strongly Disagree (1)	0	0	0	0	0	0	0	1

*[Handwritten Signature]*

**PRINCIPAL**  
PRINCE DR. K. VASUDEVAN COLLEGE OF  
ENGINEERING AND TECHNOLOGY  
POMMAR, CHENNAI-600127.



# PRINCE Dr. K. VASUDEVAN COLLEGE OF ENGINEERING AND TECHNOLOGY

(Approved by AICTE, Affiliated to Anna University & ISO 9001:2015 Certified Institution)  
Medavakkam-Mambakkam Main Road, Ponmar, Chennai-600127

## ALUMNI FEEDBACK ON SYLLABUS – ANALYSIS REPORT

Academic Year

2019-2020

Department

Electronics and Communication Engineering

Number of Respondents

22

Feedback Rate: Strongly Agree (5), Agree (4), Neutral (3), Disagree (2), Strongly Disagree (1)

S. No	Feedback on Syllabus	5	4	3	2	1
1	Are the syllabus helps the students in improving professional competencies?	17	3	1	1	0
2	Is the syllabus suitable to present industry and Domain requirement?	20	2	0	0	0
3	Are the syllabus concepts being useful in promoting ethics and inspiring self-discipline?	18	3	1	0	0
4	Did the courses enabled to build your future carrier?	17	3	1	0	1
5	Is the course sufficient to enable the students to analyze and identify the necessary solutions?	20	2	0	0	0
6	Is the course providing good balance between theory and applications?	18	2	1	1	0
7	The syllabus facilitates in enriching knowledge and creates employment opportunities	19	2	1	0	0
8	Rate the syllabus and curriculum	20	1	1	0	0

*[Handwritten Signature]*

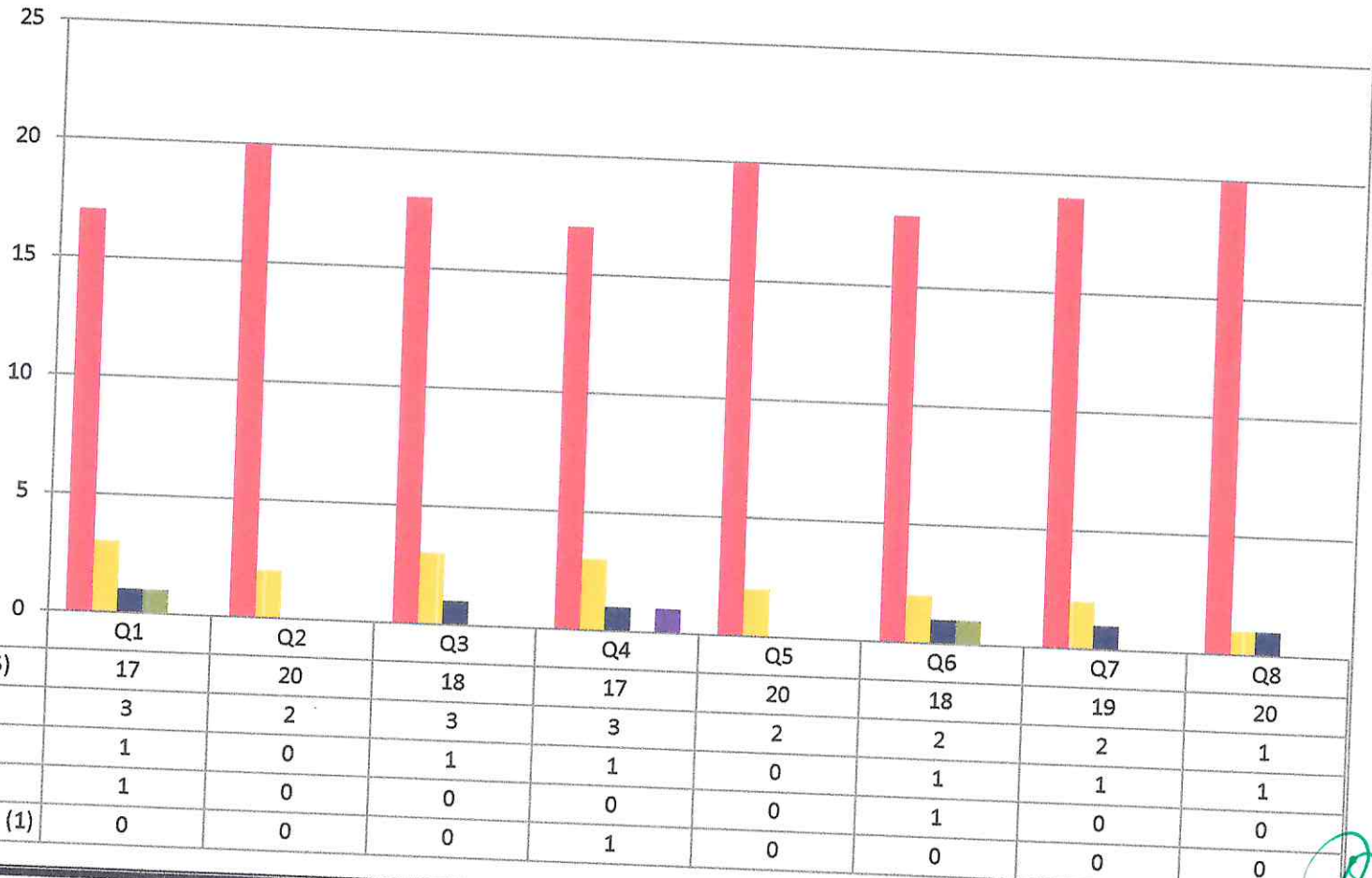
**PRINCIPAL**  
PRINCE DR. K. VASUDEVAN COLLEGE OF  
ENGINEERING AND TECHNOLOGY



# PRINCE Dr. K. VASUDEVAN COLLEGE OF ENGINEERING AND TECHNOLOGY

(Approved by AICTE, Affiliated to Anna University & ISO 9001:2015 Certified Institution)  
Medavakkam-Mambakkam Main Road, Ponmar, Chennai-600127

## ALUMNI FEEDBACK ON SYLLABUS - 2019-2020 Electronics and Communication Engineering (NUMBER OF RESPONDENTS - 22)



*[Signature]*  
**PRINCIPAL**



# PRINCE Dr. K. VASUDEVAN COLLEGE OF ENGINEERING AND TECHNOLOGY

(Approved by AICTE, Affiliated to Anna University & ISO 9001:2015 Certified Institution)  
Medavakkam-Mambakkam Main Road, Ponmar, Chennai-600127

## ALUMNI FEEDBACK ON SYLLABUS – ANALYSIS REPORT

Academic Year

2019-2020

Department

Electrical and Electronics Engineering

Number of Respondents

12

Feedback Rate: Strongly Agree (5), Agree (4), Neutral (3), Disagree (2), Strongly Disagree (1)

S. No	Feedback on Syllabus	5	4	3	2	1
1	Are the syllabus helps the students in improving professional competencies?	9	2	1	0	0
2	Is the syllabus suitable to present industry and Domain requirement?	8	3	0	1	0
3	Are the syllabus concepts being useful in promoting ethics and inspiring self-discipline?	10	1	1	0	0
4	Did the courses enabled to build your future carrier?	11	1	0	0	0
5	Is the course sufficient to enable the students to analyze and identify the necessary solutions?	10	1	0	0	1
6	Is the course providing good balance between theory and applications?	9	2	1	0	0
7	The syllabus facilitates in enriching knowledge and creates employment opportunities	8	3	0	1	0
8	Rate the syllabus and curriculum	10	2	0	0	0

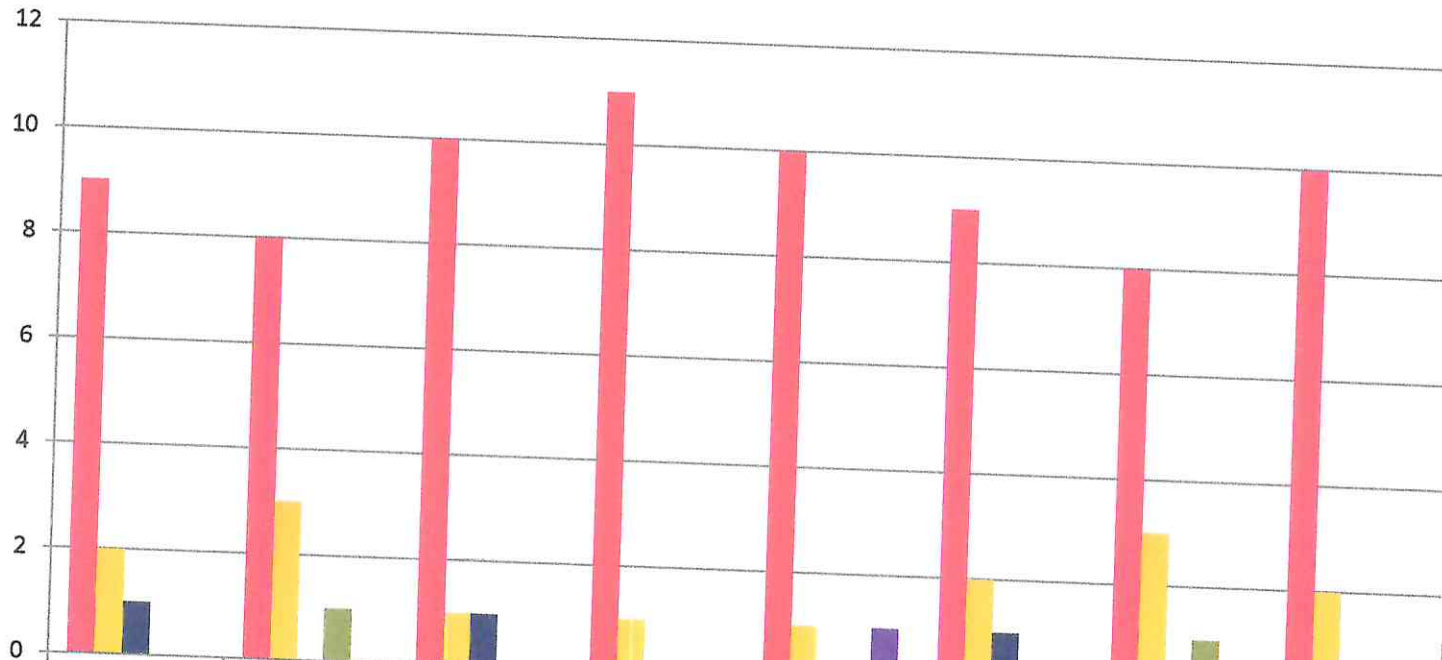
  
**PRINCIPAL**  
PRINCE DR. K. VASUDEVAN COLLEGE OF  
ENGINEERING AND TECHNOLOGY  
PONMAR, CHENNAI-600 127.



# PRINCE Dr. K. VASUDEVAN COLLEGE OF ENGINEERING AND TECHNOLOGY

(Approved by AICTE, Affiliated to Anna University & ISO 9001:2015 Certified Institution)  
Medavakkam-Mambakkam Main Road, Ponmar, Chennai-600127

## ALUMNI FEEDBACK ON SYLLABUS - 2019-2020 Electrical and Electronics Engineering (NUMBER OF RESPONDENTS - 12)



	Q1	Q2	Q3	Q4	Q5	Q6	Q7	Q8
Strongly Agree (5)	9	8	10	11	10	9	8	10
Agree (4)	2	3	1	1	1	2	3	2
Neutral (3)	1	0	1	0	0	1	0	0
Disagree (2)	0	1	0	0	0	0	1	0
Strongly Disagree (1)	0	0	0	0	1	0	0	0

*[Handwritten Signature]*

**PRINCIPAL**  
PRINCE DR. K. VASUDEVAN COLLEGE OF  
ENGINEERING AND TECHNOLOGY  
PONMAR, CHENNAI-600 127.



# PRINCE Dr. K. VASUDEVAN COLLEGE OF ENGINEERING AND TECHNOLOGY

(Approved by AICTE, Affiliated to Anna University & ISO 9001:2015 Certified Institution)  
Medavakkam-Mambakkam Main Road, Ponmar, Chennai-600127

## ALUMNI FEEDBACK ON SYLLABUS – ANALYSIS REPORT

Academic Year

2019-2020

Department

Mechanical Engineering

Number of Respondents

25

Feedback Rate: Strongly Agree (5), Agree (4), Neutral (3), Disagree (2), Strongly Disagree (1)

S. No	Feedback on Syllabus	5	4	3	2	1
1	Are the syllabus helps the students in improving professional competencies?	22	3	0	0	0
2	Is the syllabus suitable to present industry and Domain requirement?	20	4	1	0	0
3	Are the syllabus concepts being useful in promoting ethics and inspiring self-discipline?	20	4	1	0	0
4	Did the courses enabled to build your future carrier?	22	2	0	0	1
5	Is the course sufficient to enable the students to analyze and identify the necessary solutions?	19	5	1	0	0
6	Is the course providing good balance between theory and applications?	20	4	1	0	0
7	The syllabus facilitates in enriching knowledge and creates employment opportunities	21	3	0	1	0
8	Rate the syllabus and curriculum	22	2	1	0	0

*[Handwritten Signature]*

**PRINCIPAL**  
PRINCE DR. K. VASUDEVAN COLLEGE OF  
ENGINEERING AND TECHNOLOGY  
POMMAR, CHENNAI-600 127.



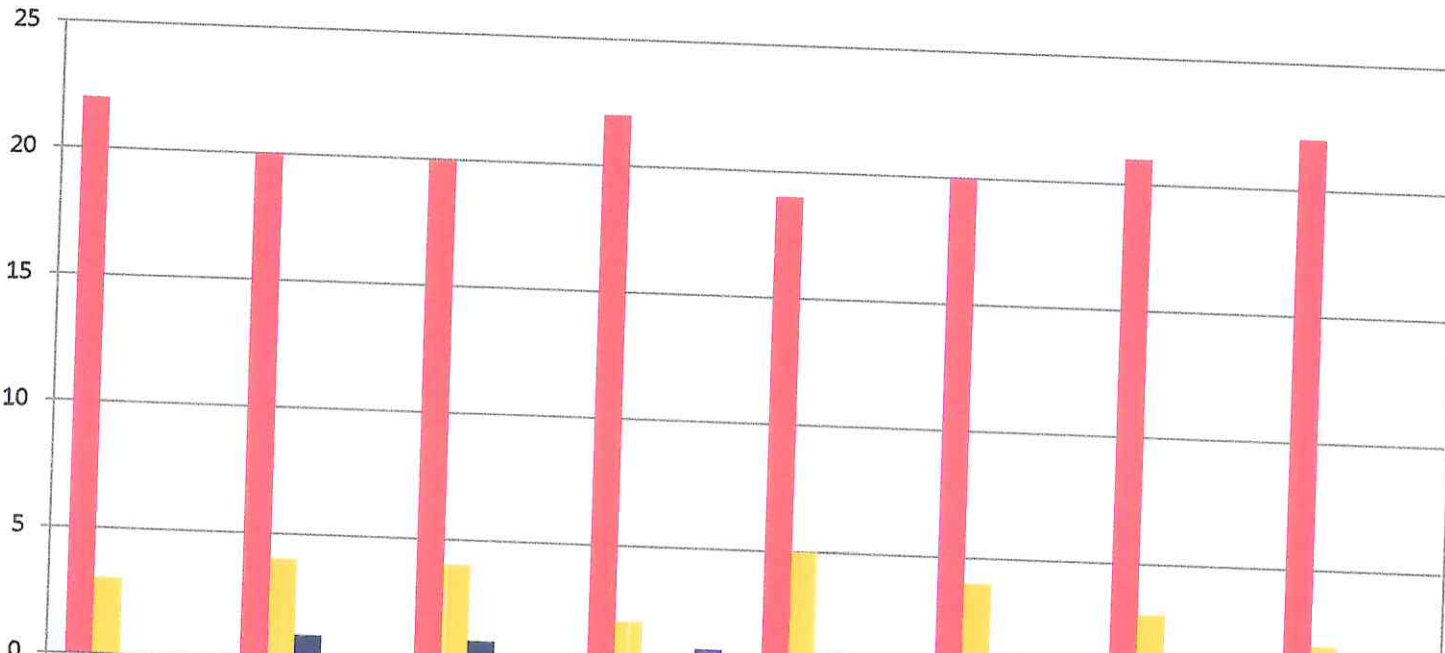
# PRINCE Dr. K. VASUDEVAN COLLEGE OF ENGINEERING AND TECHNOLOGY

(Approved by AICTE, Affiliated to Anna University & ISO 9001:2015 Certified Institution)  
Medavakkam-Mambakkam Main Road, Ponmar, Chennai-600127

## ALUMNI FEEDBACK ON SYLLABUS - 2019-2020

### Mechanical Engineering

(NUMBER OF RESPONDENTS - 25)



	Q1	Q2	Q3	Q4	Q5	Q6	Q7	Q8
Strongly Agree (5)	22	20	20	22	19	20	21	22
Agree (4)	3	4	4	2	5	4	3	2
Neutral (3)	0	1	1	0	1	1	0	1
Disagree (2)	0	0	0	0	0	0	1	0
Strongly Disagree (1)	0	0	0	1	0	0	0	0

*R. Sridhar*

**PRINCIPAL**  
PRINCE DR. K. VASUDEVAN COLLEGE OF  
ENGINEERING AND TECHNOLOGY  
PONMAR, CHENNAI-600 127.